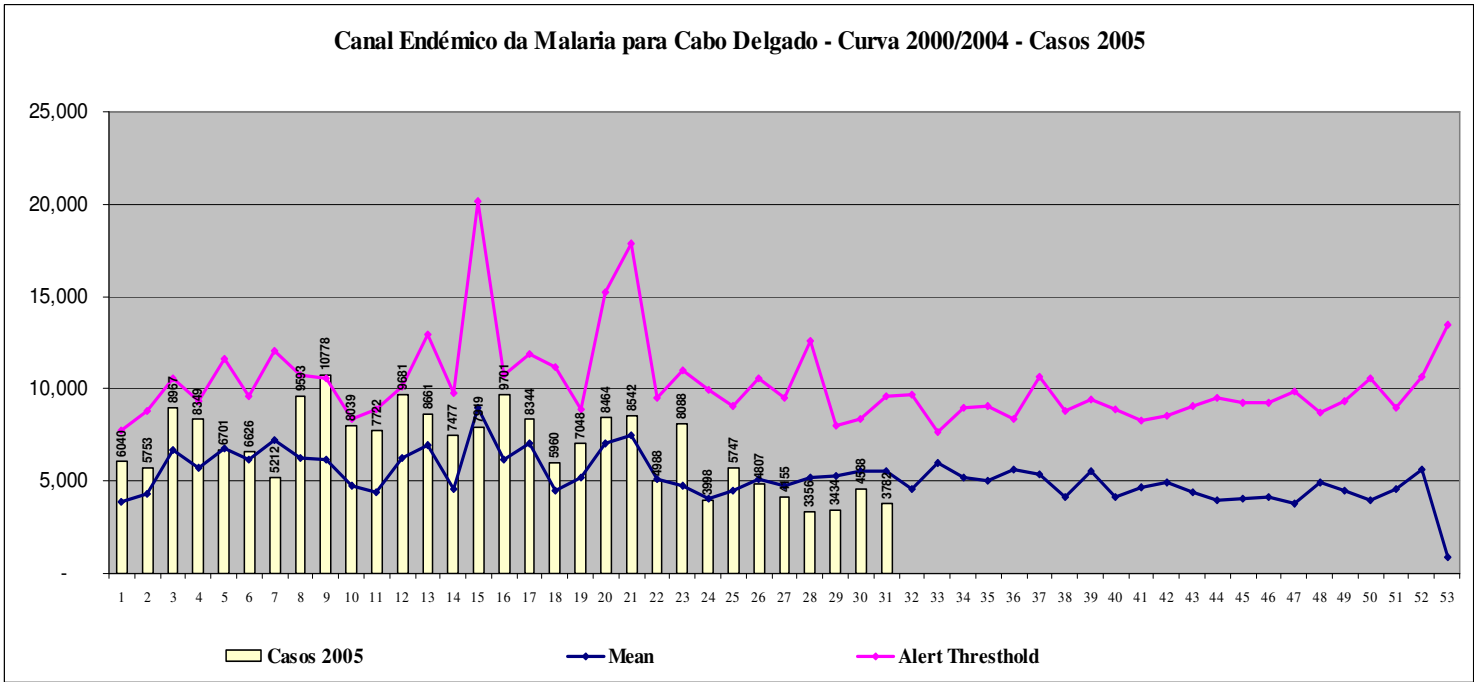
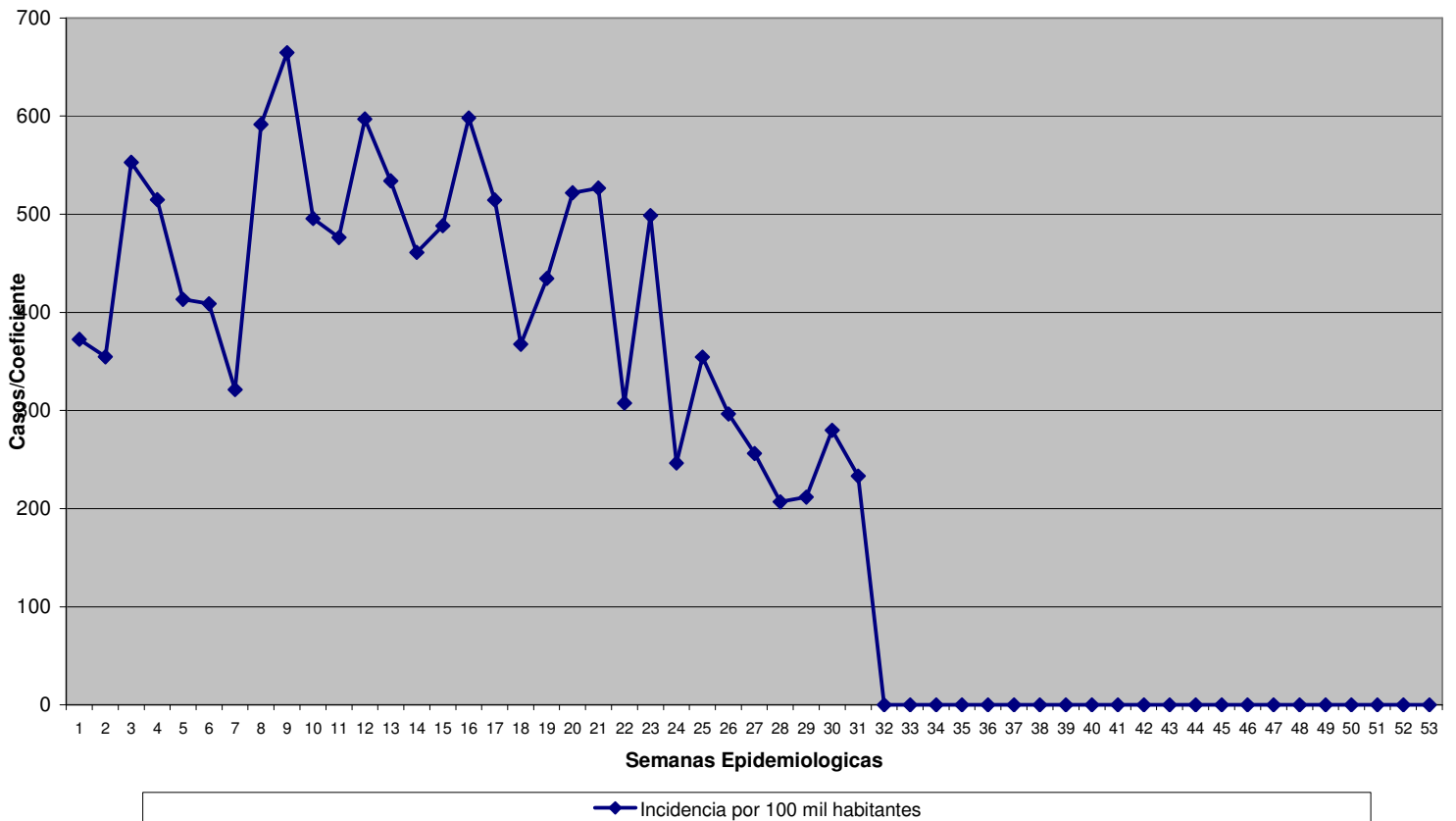


CABO DELGADO

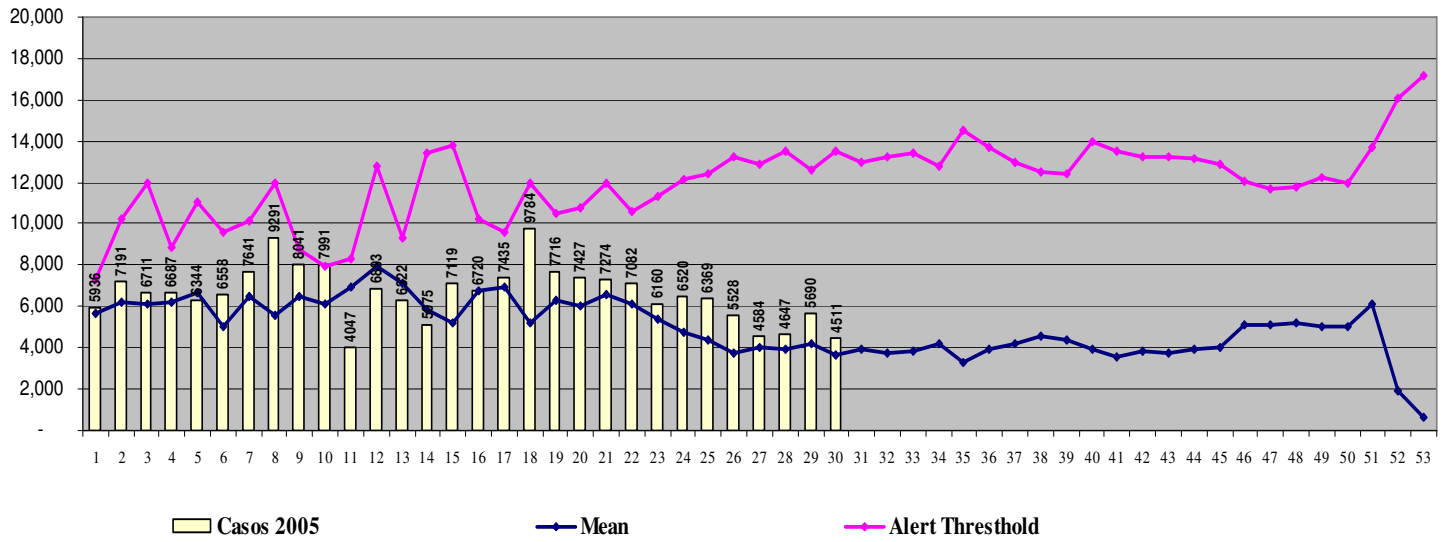


Coeficiente de Incidência da Malaria em 100 mil habitantes - Cabo Delgado

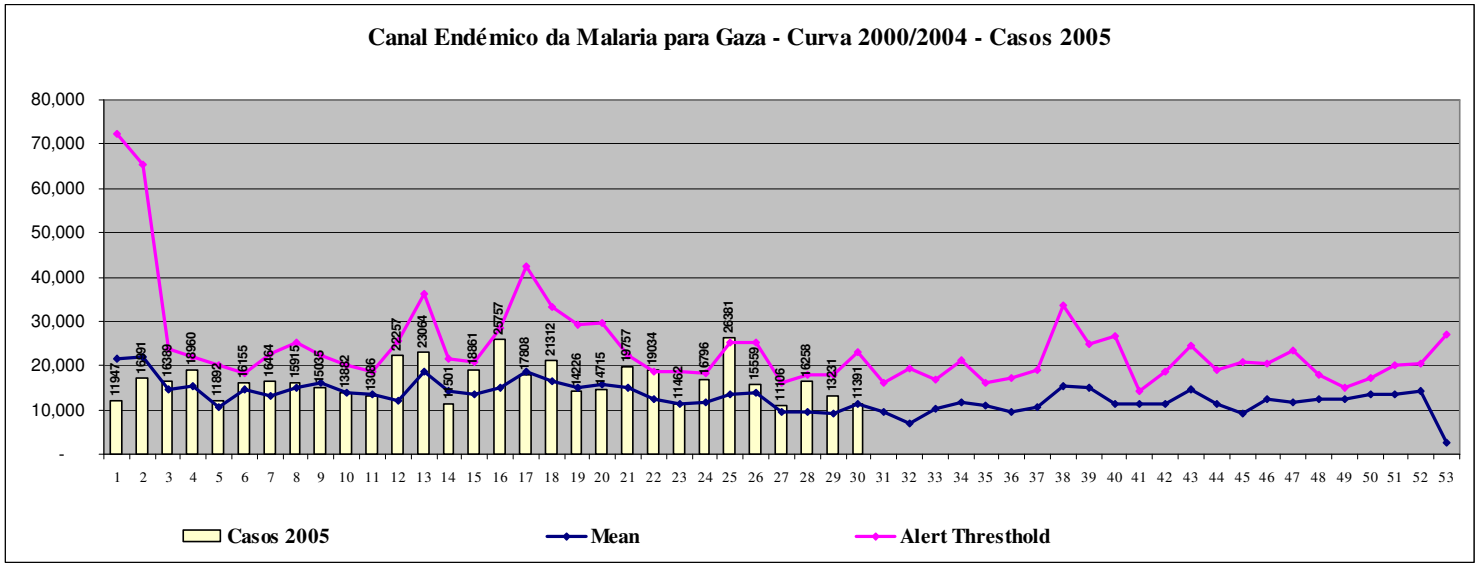


CIDADE DE MAPUTO

Canal Endêmico da Malaria para Cidade de Maputo - Curva 2000/2004 - Casos 2005

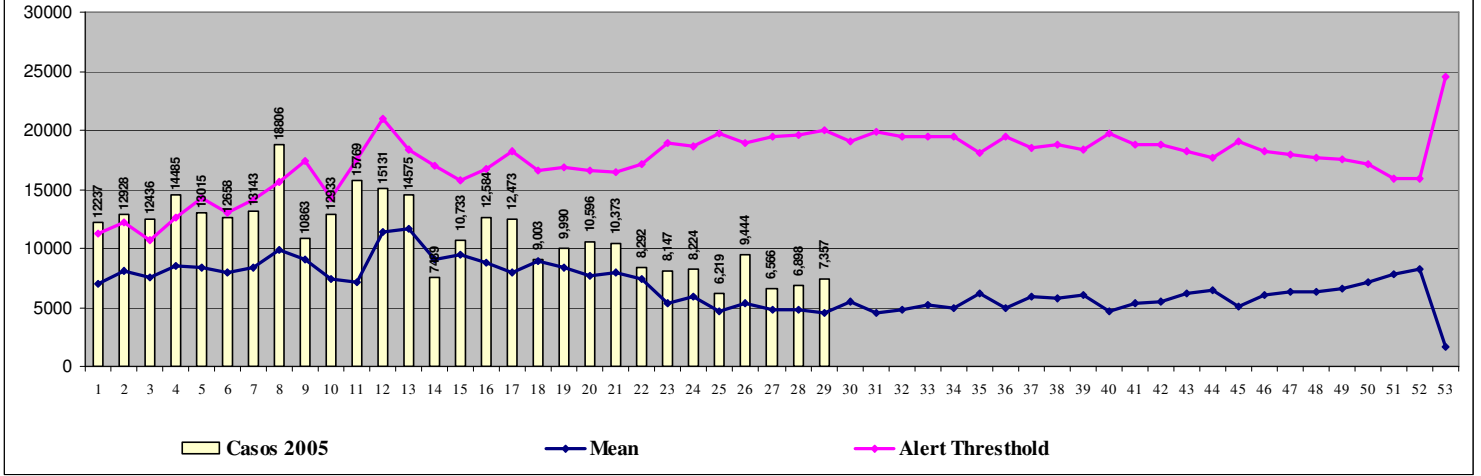


GAZA

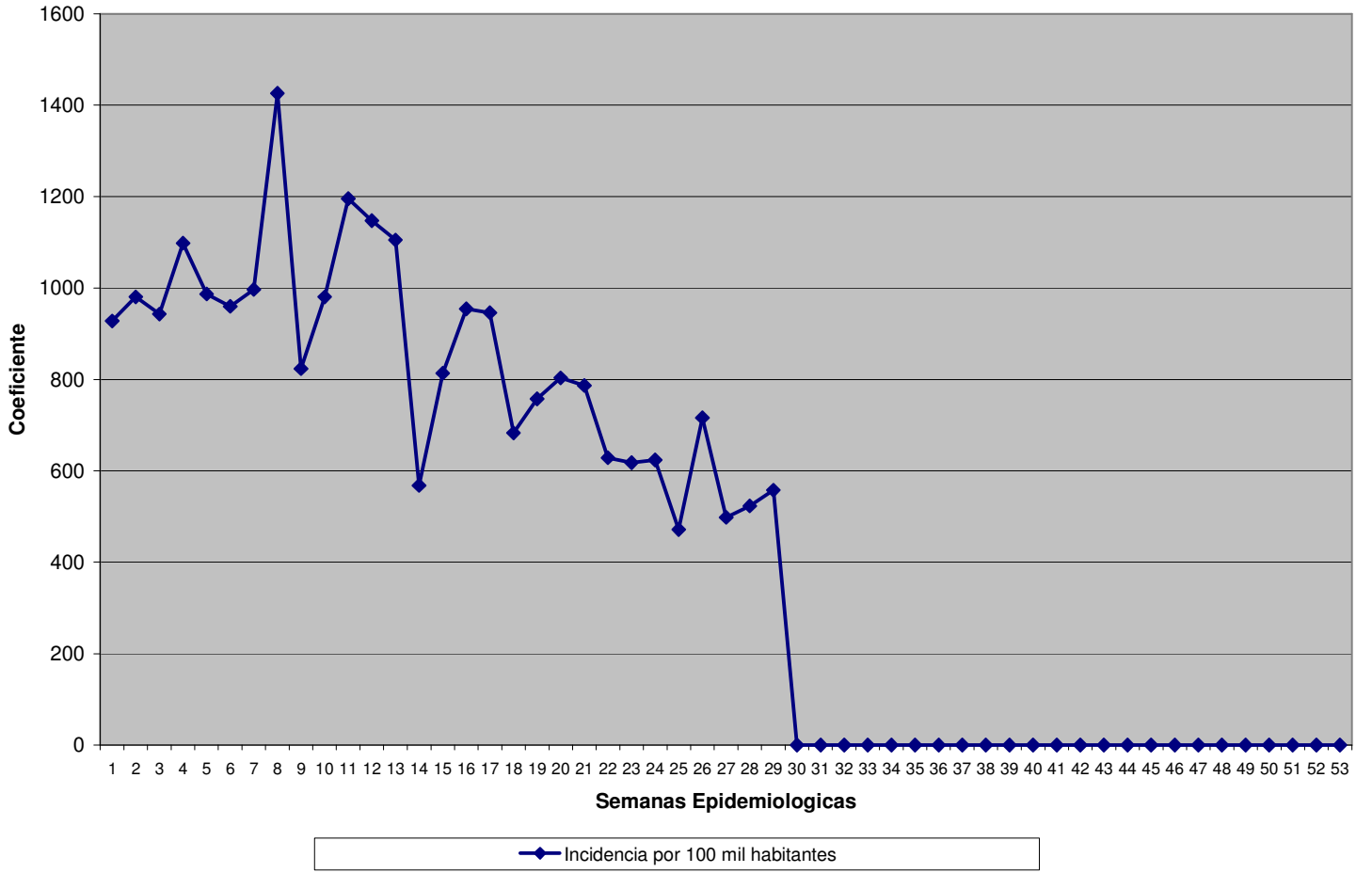


MANICA

Canal Endêmico da Malaria para Manica - Curva 2000/2004 - Casos 2005

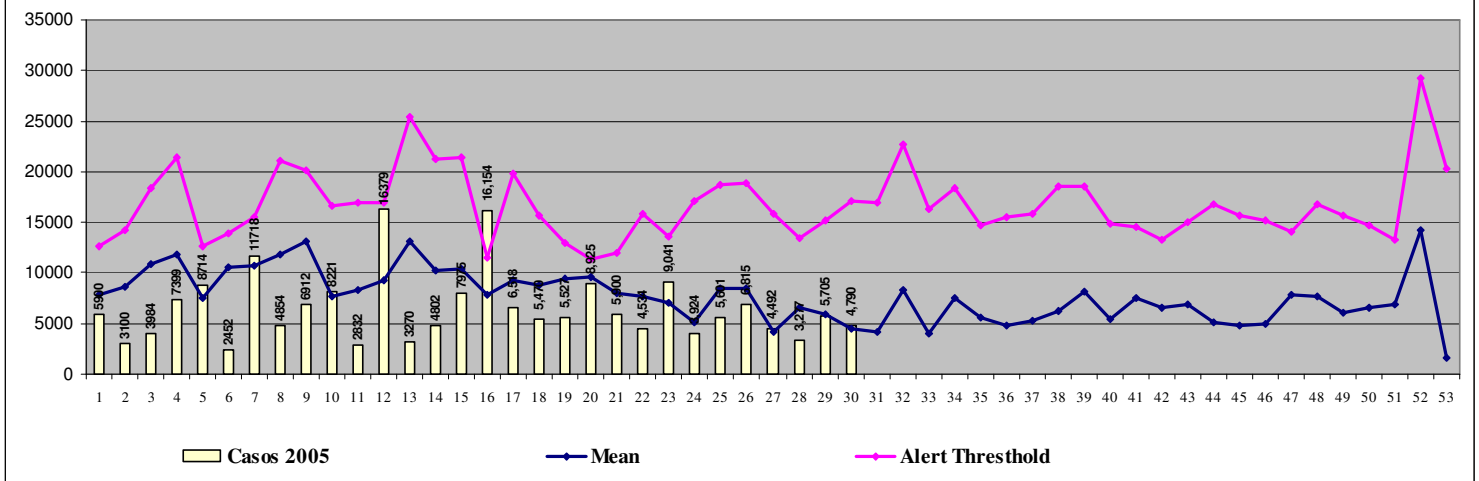


Coefficiente de Incidencia da Malaria em 100 mil habitantes - Manica

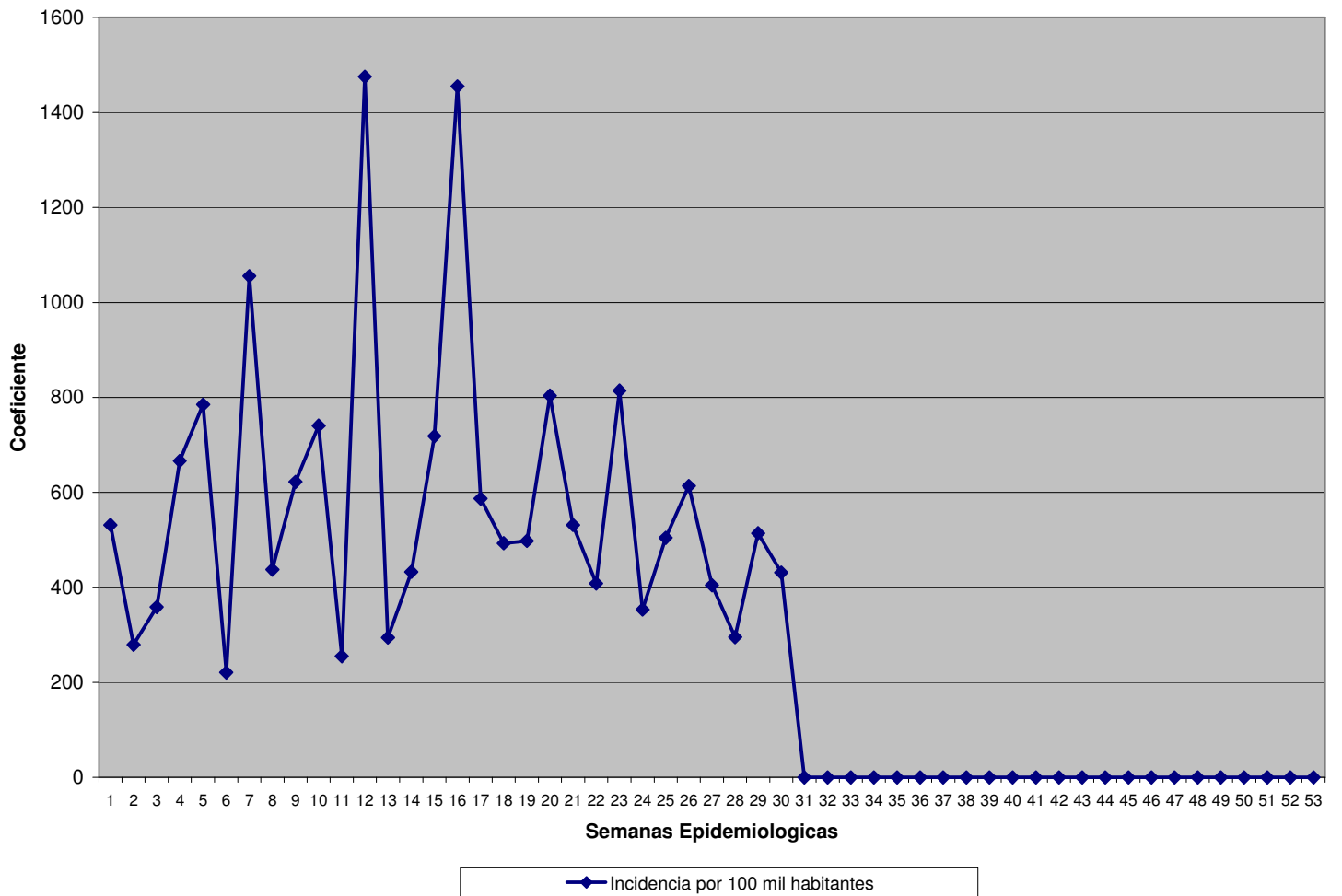


PROVÍNCIA DE MAPUTO

Canal Endémico da Malaria para Província de Maputo - Curva 2000/2004 - Casos 2005

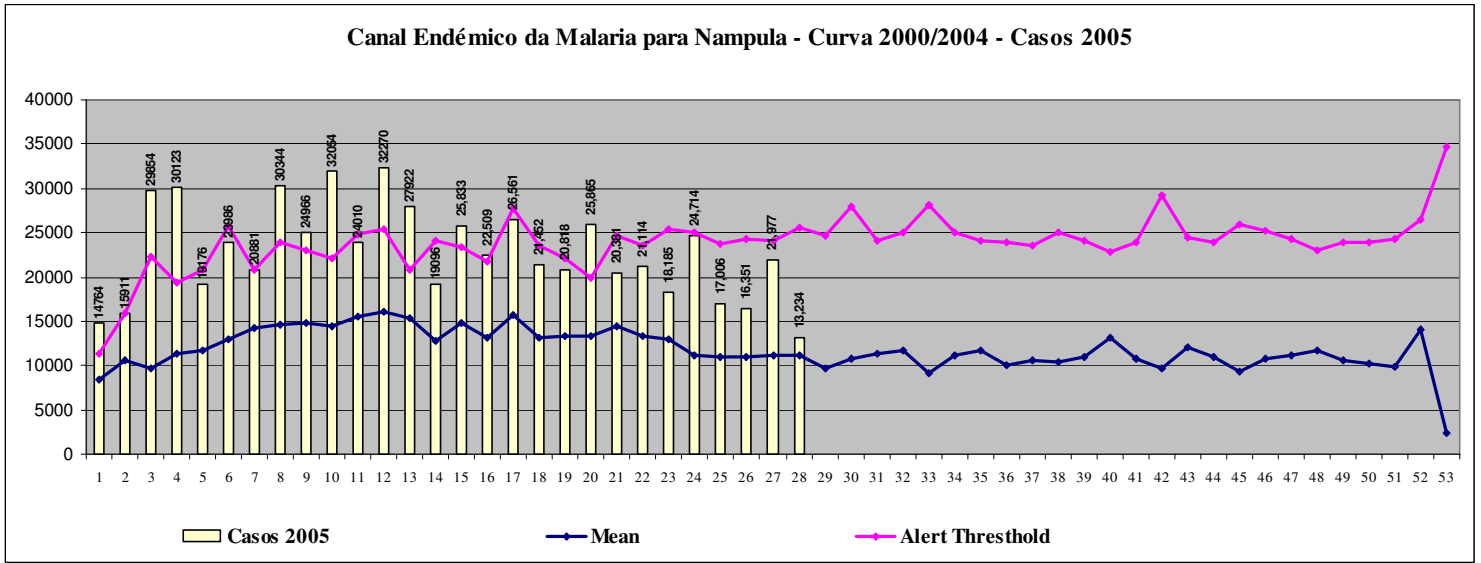


Coefficiente de Incidencia da Malaria em 100 mil habitantes - Província de Maputo

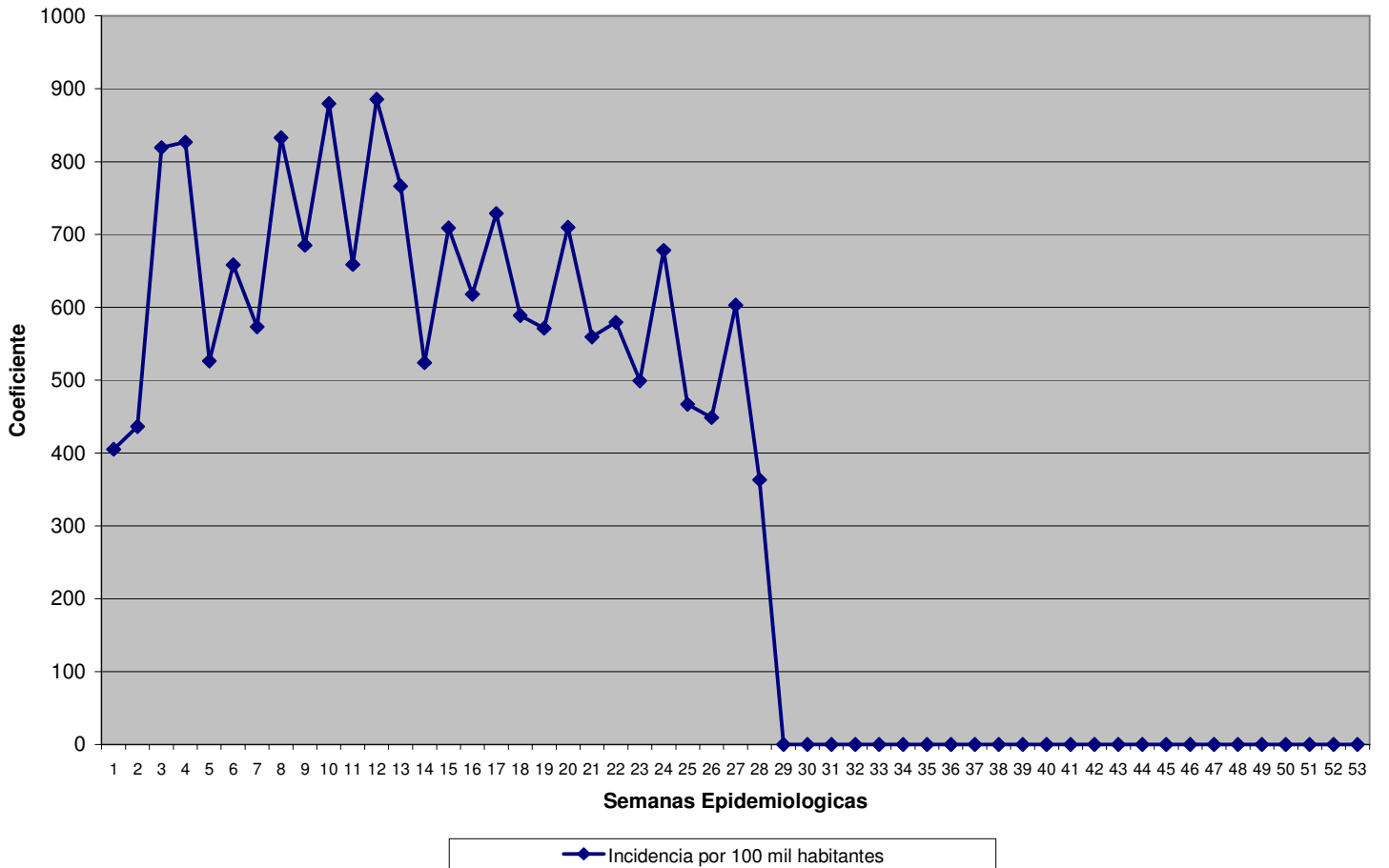


NAMPULA

Canal Endêmico da Malaria para Nampula - Curva 2000/2004 - Casos 2005

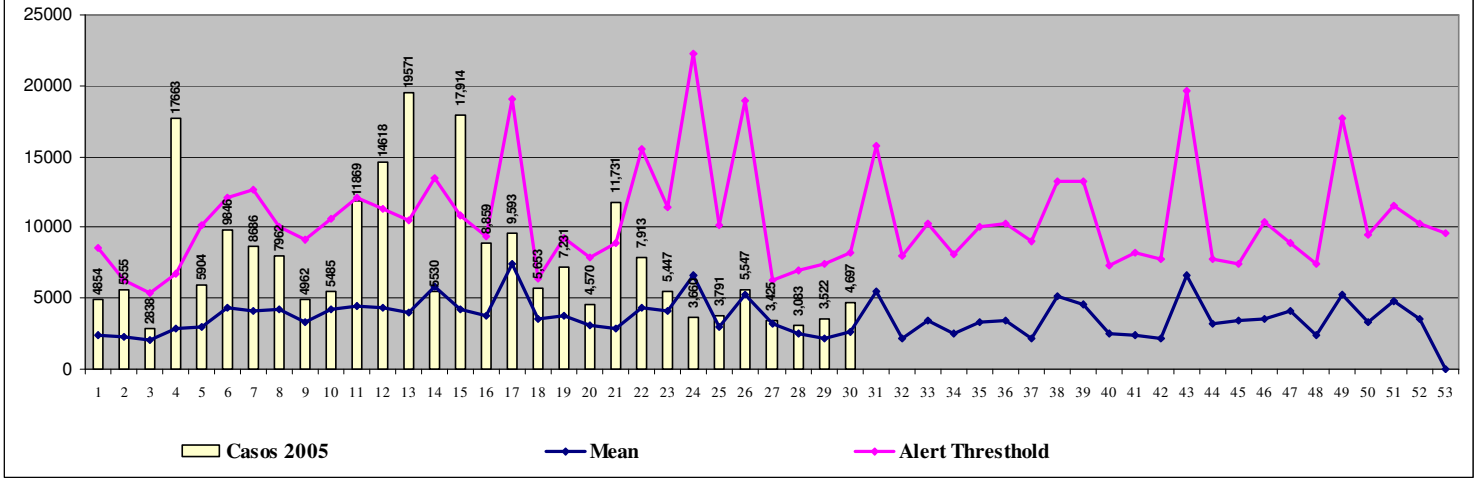


Coefficiente de Incidência da Malaria em 100 mil habitantes - Nampula

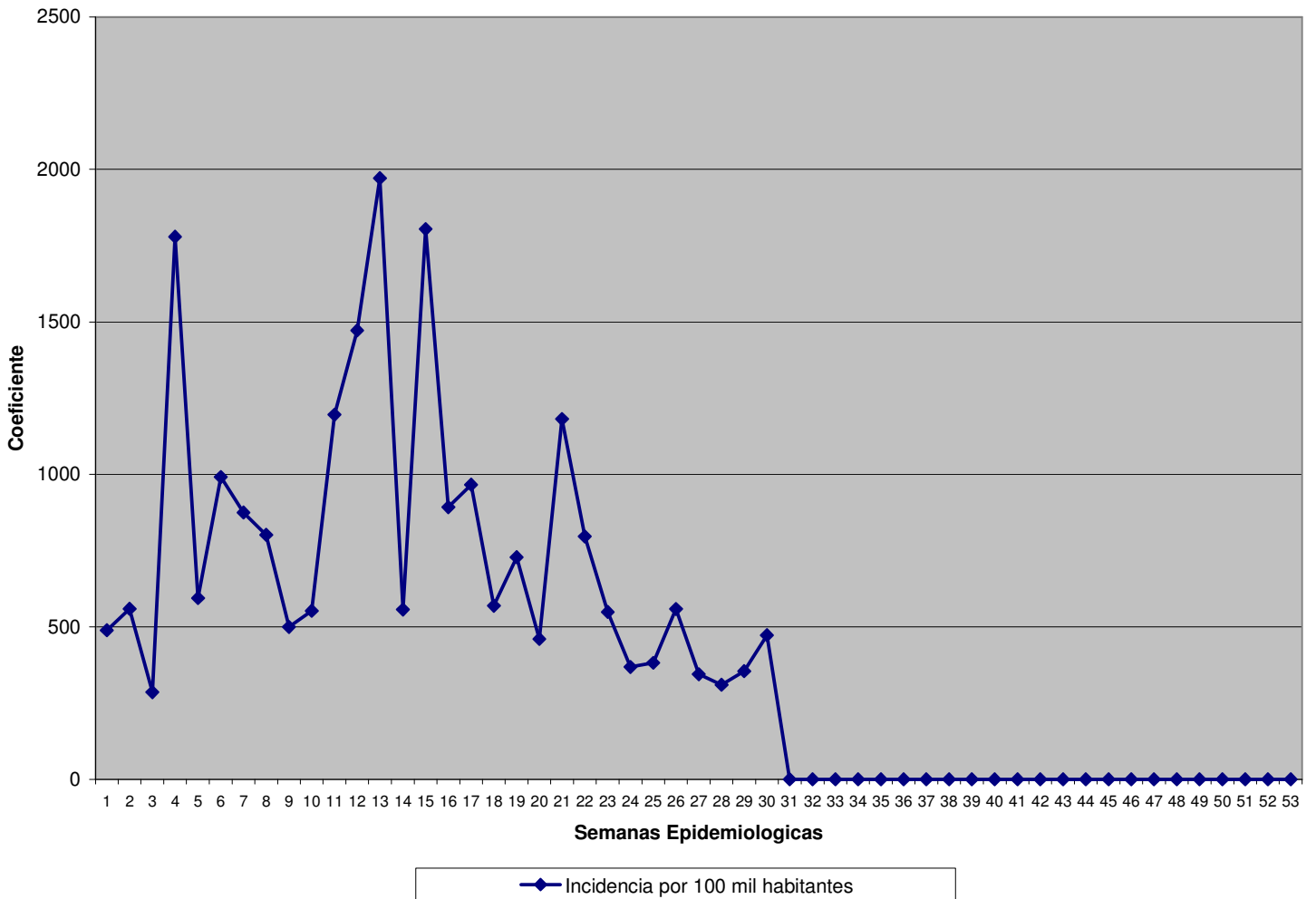


NIASSA

Canal Endêmico da Malaria para Niassa - Curva 2000/2004 - Casos 2005

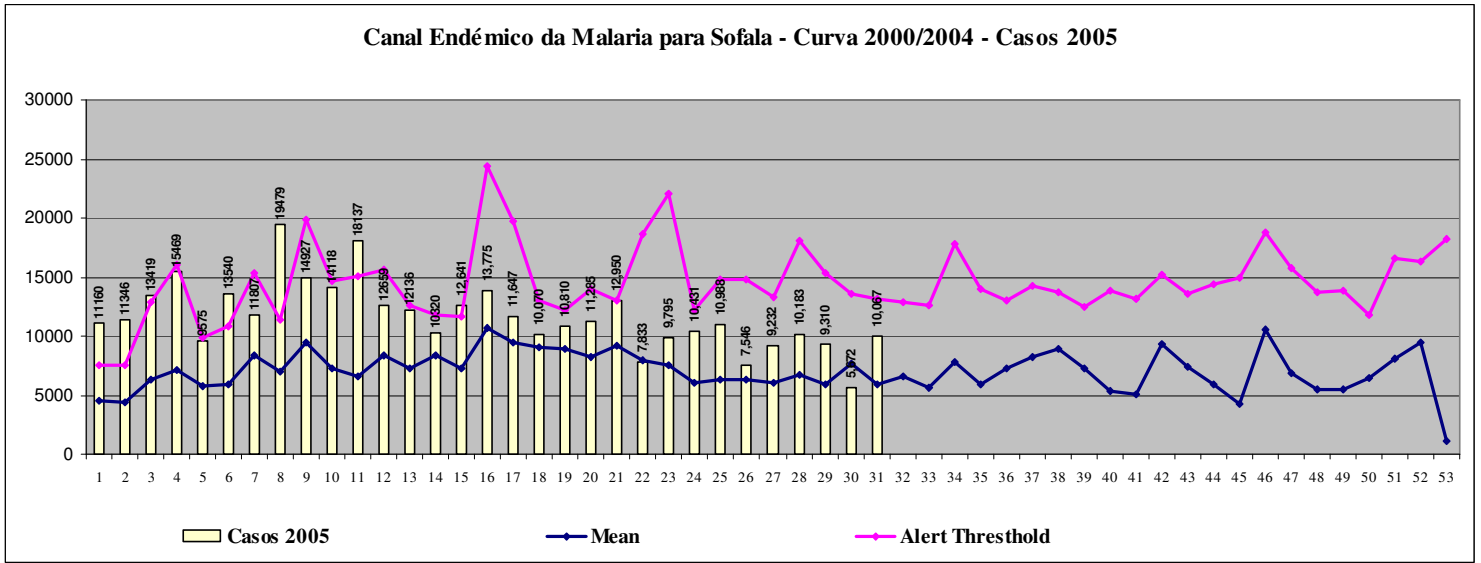


Coeficiente de Incidencia da Malaria em 100 mil habitantes - Niassa

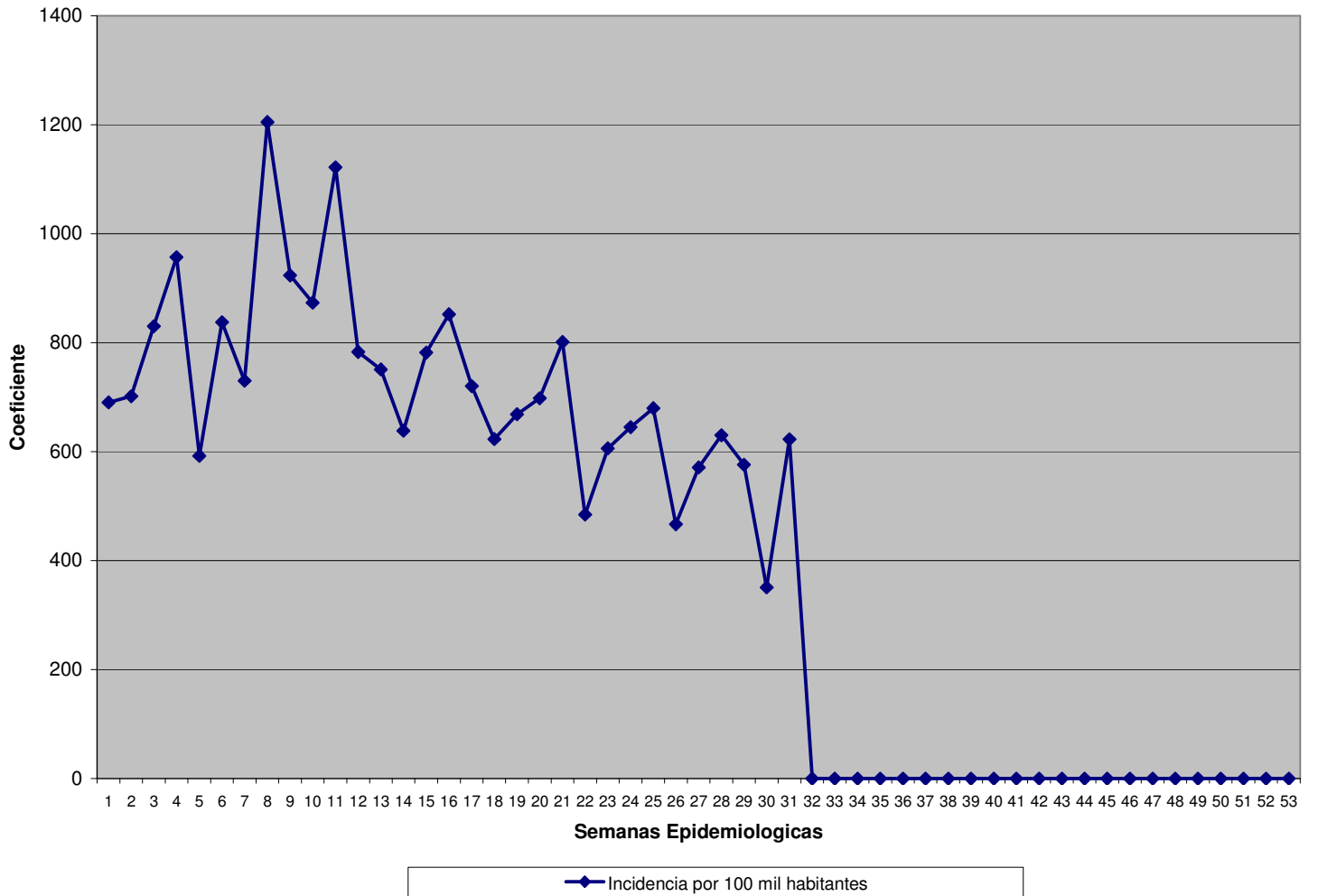


SOFALA

Canal Endêmico da Malaria para Sofala - Curva 2000/2004 - Casos 2005

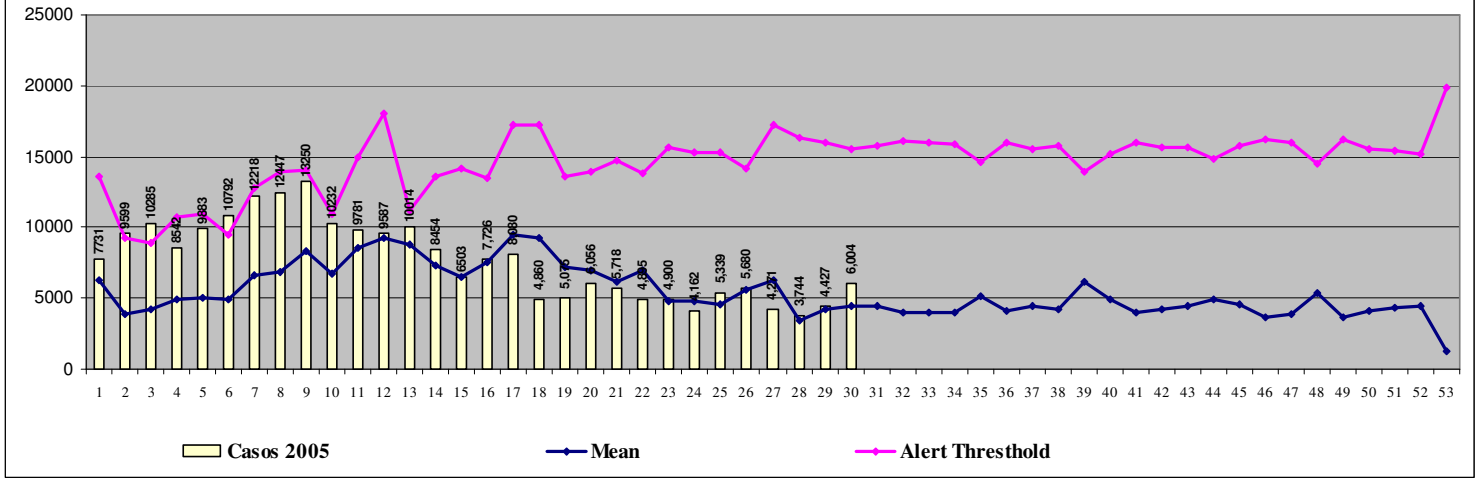


Coeficiente de Incidencia da Malaria em 100 mil habitantes - Sofala

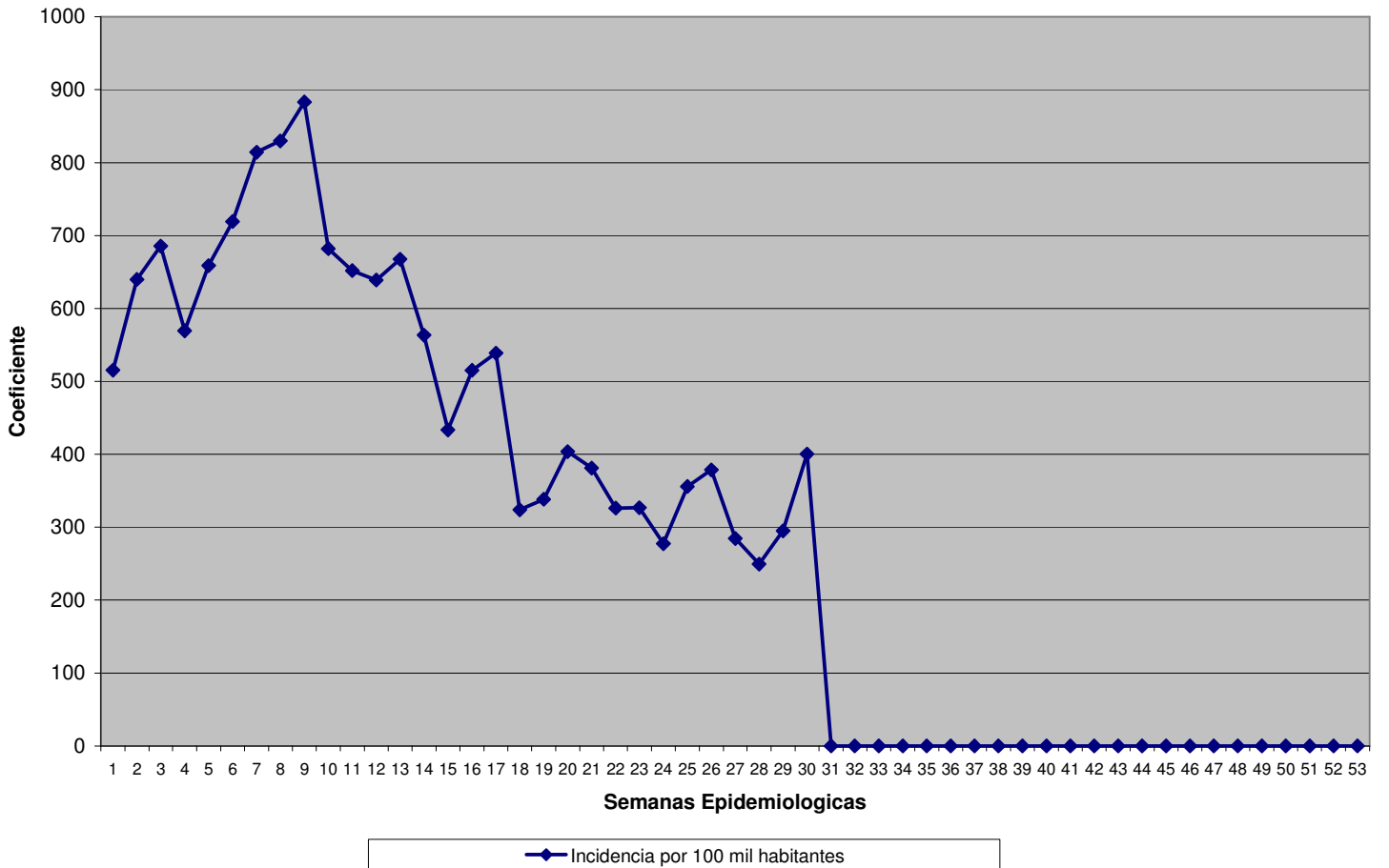


TETE

Canal Endémico da Malaria para Tete - Curva 2000/2004 - Casos 2005

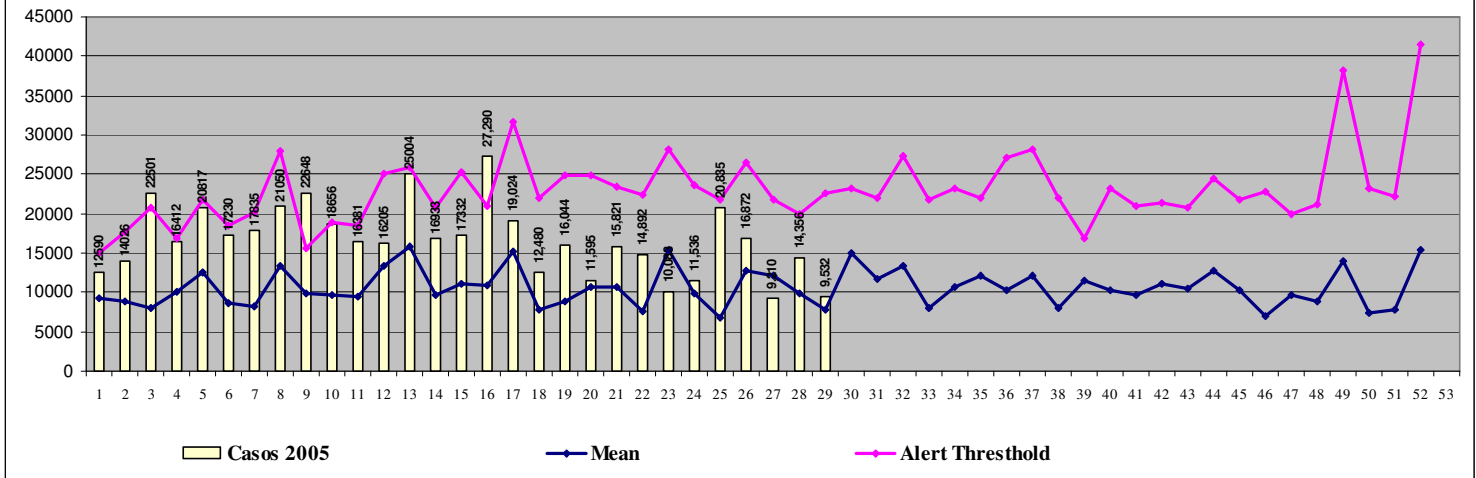


Coeficiente de Incidencia da Malaria em 100 mil habitantes - Tete

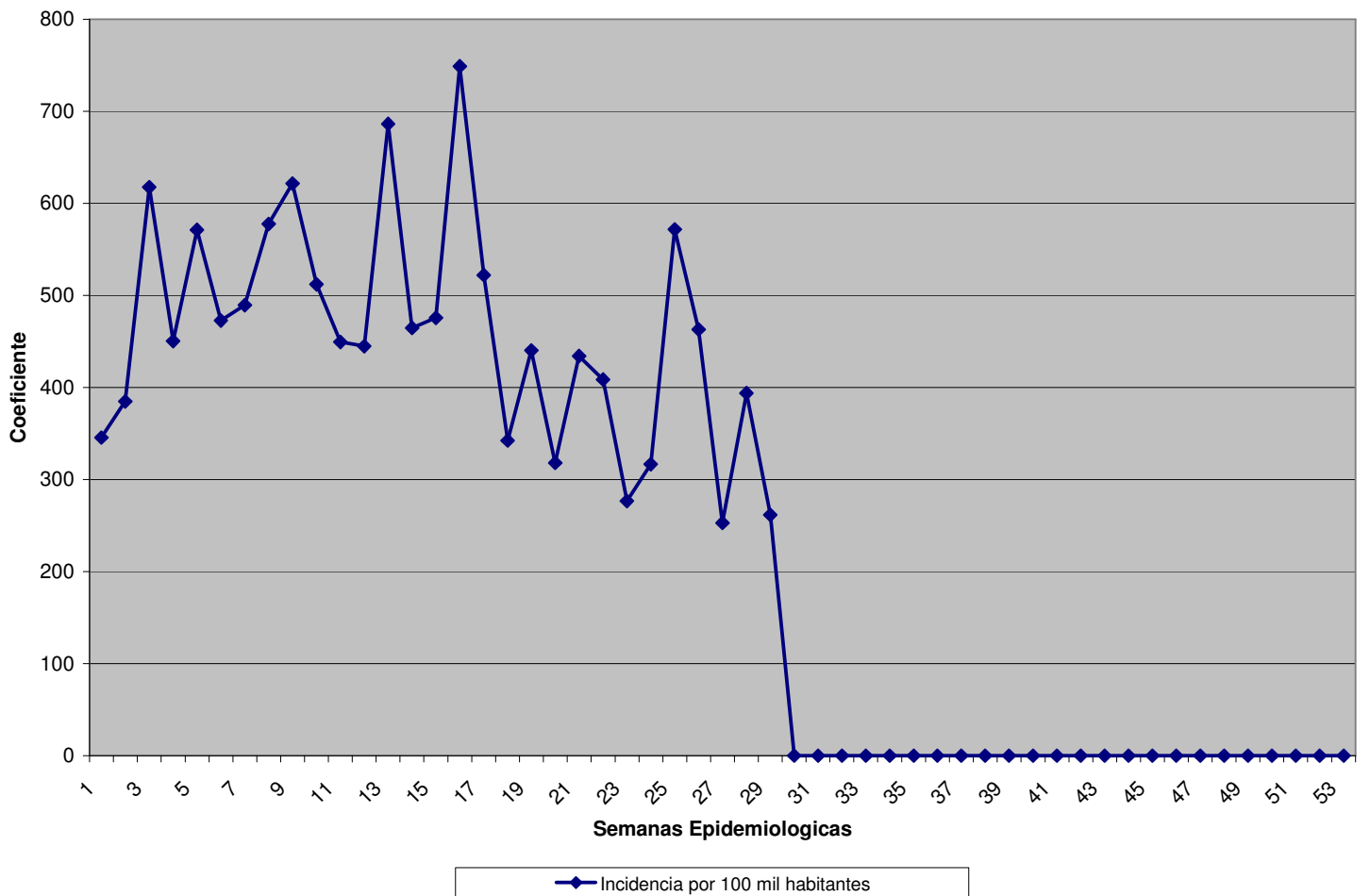


ZAMBÉZIA

Canal Endémico da Malaria para Zambézia - Curva 2000/2004 - Casos 2005

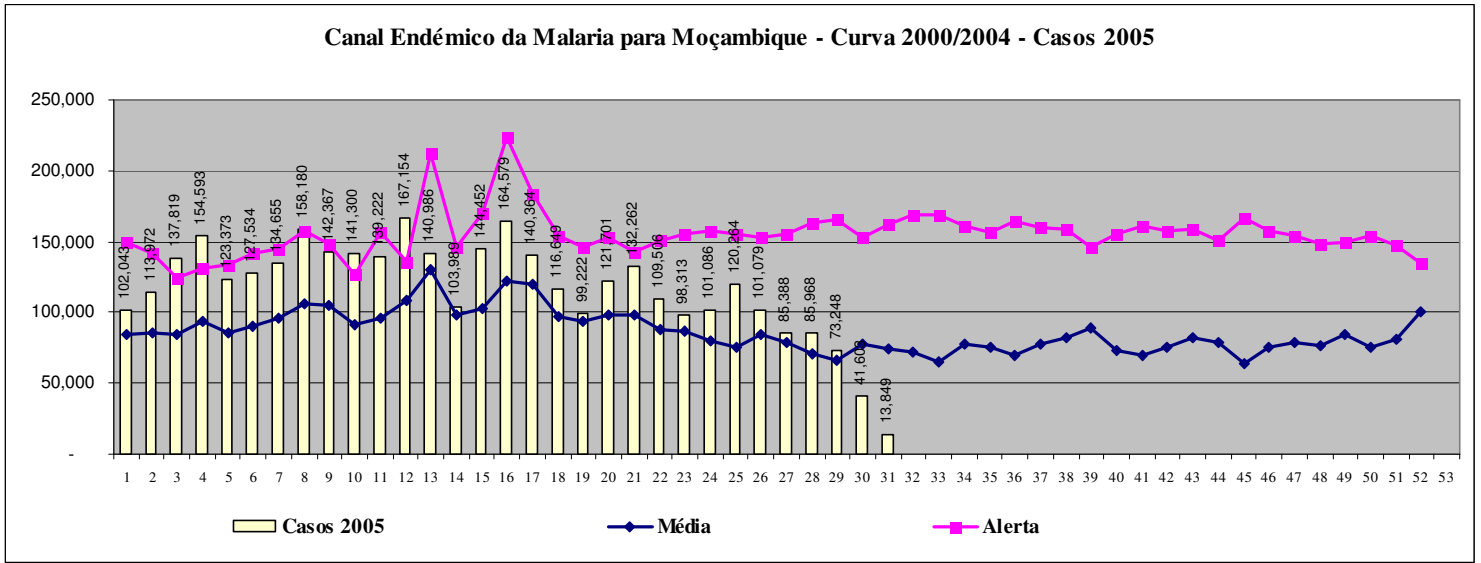


Coefficiente de Incidencia da Malaria em 100 mil habitantes - Zambézia



MOÇAMBIQUE

Canal Endémico da Malaria para Moçambique - Curva 2000/2004 - Casos 2005



Incidencia de Malaria por 100 mil habitantes - Moçambique

